

Knitware 2.50.2 Installation Instructions for Windows 7 (Preliminary)

Contents

Background (PLEASE READ).....	2
Disclaimer – READ BEFORE PROCEEDING	2
Windows 7 Professional and Ultimate Editions.....	3
Running Knitware in Virtual Mode (XP Mode).....	3
Running Knitware in Native Mode.....	3
Windows 7 Home Edition.....	4
The Knitware Product CD	5
Cleaning Out Old Installations.....	6
Next Steps	6
Preparing for Installation	7
Using the Product CD	7
Preparing Knitware.....	7
Preparing BDE.....	8
Next Steps	8
Installing Knitware.....	9
PHASE 1: THE INSTALLATION FILE	9
PHASE 2: RUNNING THE INSTALLATION	13
PHASE 3: SETTING THE PROGRAM PROPERTIES.....	16
INSTALLING BDE.....	18
Restarting Your System (optional).....	20
Next Steps	20
Running Knitware	21

Background (PLEASE READ)

Knitware version 2.50.2 programs were last updated to run on 32-bit Windows XP systems. As a result, they are now designated as “legacy applications” for Windows. With the release of Windows 7, it appeared that compatibility for legacy programs was restricted to the more “advanced” editions of Windows 7 (Professional, Ultimate, etc., 32- or 64-bit), using “Microsoft Virtual PC” and “XP Mode” (*referred to as running in “virtual mode” as opposed to “native mode”*). Unfortunately, the majority of Windows 7 systems being sold are installed with Windows 7 Home Edition, which does not support virtual mode, implying that users of Windows 7 Home cannot run Knitware programs, nor can “advanced” Windows 7 systems run Knitware in native mode.

Another vital aspect of running Knitware on Windows 7 in native mode involves the Borland Database Engine (BDE), a vital internal component of the Knitware programs. The BDE that is integrated in the current Knitware programs has now been updated to run on Windows 7. If the old BDE installed with Knitware is replaced with the updated BDE, then Knitware can be installed and set up to run on Windows 7 in native mode.

These instructions provide the list of steps necessary to achieve this.

Disclaimer – READ BEFORE PROCEEDING

Note that this document is the preliminary draft of a revised installation guide for Windows 7 users. If you have questions, please direct them to support@greatknitdesigns.com and we will work with you to try to resolve the problem. We would also appreciate hearing of any errors or points of confusion.

These instructions have been tested by Great Knit Designs (GKD) on **32-bit Windows 7 Professional and 32-bit Windows 7 Home Premium editions**. Testing on Windows 7 Home Basic has **not** been successful. These installation instructions have been reported to work successfully on at least one system running 64-bit Windows 7 Ultimate edition, **but this is not confirmed**. Please check http://www.greatknitdesigns.com/SupportNews_Win7.html for an updated list of confirmed installations as testing proceeds.

This new procedure assumes a basic understanding of, and comfort level with, the way that Windows 7 sets up your disk and folders and such, running programs on Windows 7, navigating to websites, downloading files, and working through installation procedures. If you are not comfortable with doing all of this, we encourage you to obtain the assistance of someone who is.

Windows 7 Professional and Ultimate Editions

If you have these advanced editions of Windows 7, you can run Knitware in either native mode or virtual mode (also referred to as “XP Mode”).

Running Knitware in Virtual Mode (XP Mode)

To run Knitware in virtual mode, you need to download Virtual PC and XP Mode software from <http://www.microsoft.com/windows/virtual-pc/default.aspx>. The Microsoft website will provide instructions for the download and installation of these resources. **Note that you must first download and install these programs before installing the Knitware programs. To subsequently run Knitware, you will always have to run “XP Mode” first in order to start the “virtual PC”, then run Knitware from the virtual PC. Installation of Knitware in virtual mode is performed as per the [Knitware Installation Guide for Windows XP](#).**

Running Knitware in Native Mode

To run Knitware in native mode on Windows 7 Professional or Ultimate Editions, follow the instructions for **Windows 7 Home Edition** on the next page.

Windows 7 Home Edition

These instructions currently presume you are installing one or more Knitware programs from files downloaded from <http://www.greatknitdesigns.com/download250.htm>. Instructions for installation from the product CD will be provided at a later time.

A critical aspect of this process is the installation of an updated version of the **Borland Database Engine (BDE)**, an integral component of the Knitware (KW) programs. This updated BDE must be installed **after** installation of the KW programs and **before** running the programs. In addition, the KW programs are installed **outside** the usual location of the “Program Files” folder on your system’s C drive.

In the following sections, you’ll be led through the following procedure:

- Clean out any previous installation of Knitware (KW) on your computer.
- Prepare your system with the proper KW and BDE files for installation.
- Install the KW program(s).
- Install the BDE.
- Run the KW program(s), activating with the license key (serial number) if it is available.

Each stage of the procedure will start on a new page, beginning with the next page.

The Knitware Product CD

All programs and documentation are available by download from the Great Knit Designs website at the <http://www.greatknitdesigns.com/download250.htm> web page.

However, you may have chosen to purchase the Knitware Product CD. If you are using the Product CD, place it in the CD drive now to examine the structure of folders on this CD.

The folders and files provided on the Product CD are:

- Folder SWEATERS
 - File: *Sweaters250Demo.EXE*
- Folder SKIRTS
 - File: *Skirts250Demo.EXE*
- Folder BASICS:
 - File: *Basics250Demo.EXE*
- Folder BDE:
 - File: *BDEInfoSetup.exe*
- Folder DOCUMENTATION:
 - Files:
 - Installations guides:
 - PRELIM_KW Installation_WINDOWS7.pdf
 - KWInstallGuide250.pdf (for systems other than Windows 7)
 - KWManual250_Jan2007.pdf (user manual)
 - DEMO_TUTORIAL250_Jan2007.pdf
 - GettingStartedGuide250_Jan2007.pdf

Cleaning Out Old Installations

If you attempted to install any KW program on your system prior to this, you **must** uninstall it and clean all traces of it off your system before starting this new procedure.

1. Open the Windows 7 Control Panel:
 - a. Navigate through Control Panel\Programs\Programs and Features and click on “Uninstall programs”.
 - b. Scroll down the list until you find the Knitware program to be uninstalled.
 - c. Select the program in the list, then look at the menu bar above the program names and click on “Uninstall/Change”.
 - d. Follow instructions presented to uninstall the program

Do this for **all** installed KW programs before proceeding with the next step.

2. Once you have uninstalled the KW program(s), find the original installation folder (this is usually *C:\Program Files\Knitware*) and delete it.
3. **Restart your Windows 7 system** to ensure that Knitware is completely removed.

Next Steps

Once your system has been cleaned of previous installations and has been restarted, you're ready to prepare for installation as presented on the next page.

Preparing for Installation

You now want to move the necessary files onto your system so you can proceed with the installation. You may be doing this from the Knitware Product CD, or by downloading the necessary files from the <http://www.greatknitdesigns.com/download250.htm> web page.

The files that are either copied from the product CD or downloaded from the website are named as follows:

- *Sweaters250Demo.EXE*
- *Skirts250Demo.EXE*
- *Basics250Demo.EXE*

Using the Product CD

If you have the Knitware Product CD, place that CD in your computer's CD drive at this time, if you have not already done so.

Preparing Knitware

If you are planning to install more than one Knitware (KW) program, follow this procedure to prepare each KW program before proceeding with installation.

1. Somewhere on your system, create a folder to hold the first KW program to download. This can be somewhere on your hard disk, or as a subfolder of the *Downloads* folder created automatically by Windows 7 in your user area. GKD recommends that you create a distinct folder (such as, *KW-Sweaters*, *KW-Skirts*, *KW-Basics*) for each KW program.
2. Move the necessary files into those folders:
 - If you have the Knitware Product CD, then open the folder for the KW program and copy the file contained in it to the corresponding folder on your computer system.
 - If you are downloading the KW program from the <http://www.greatknitdesigns.com/download250.htm> web page, then download the desired KW program into its designated folder.

Repeat this process for each additional KW program that you wish to install.

IMPORTANT NOTE: All download and CD files provided by GKD are scanned to ensure they are free of viruses and other problems before they are placed on the website or product CD. However, to be absolutely safe, you should scan this file with your anti-virus software to ensure it is safe to proceed using. Refer to your anti-virus software documentation for information on how to do this.

Preparing BDE

This procedure will have you copy the BDE file into a folder on your computer system hard drive. This file is named *BDEInfoSetup.exe*.

1. Create a folder someplace to hold the file for the updated Borland Database Engine (BDE).
2. Move the file into that folder:
 - If you have the Product CD, then open the folder for the BDE program and copy the file contained in it to the corresponding folder on your computer system.
 - If you are downloading the BDE from the <http://www.greatknitdesigns.com/download250.htm> web page, then download the file now into the folder on your computer system.

Next Steps

You now have set up all of the necessary files on your computer system hard disk and can now proceed with the process of *Installing Knitware* on the next page.

Installing Knitware

If you are planning to install more than one KW program, we recommend you do the installation in this order:

- Basics/Critters
- Skirts/Shawls
- Sweaters.

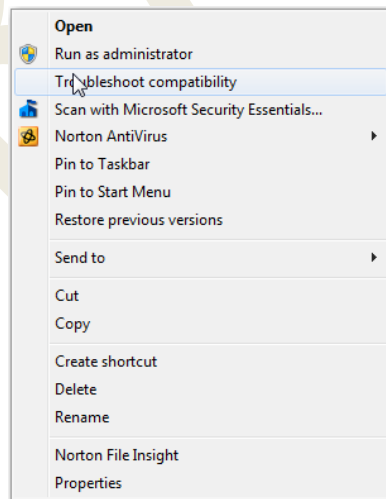
Perform the installation process to completion for *each* KW program in this recommended order for best results.

For the remainder of this procedure, we will refer to *xxx250Demo.file*, where *xxx* will indicate the KW program you want to install. *Xxx* may be one of the following:

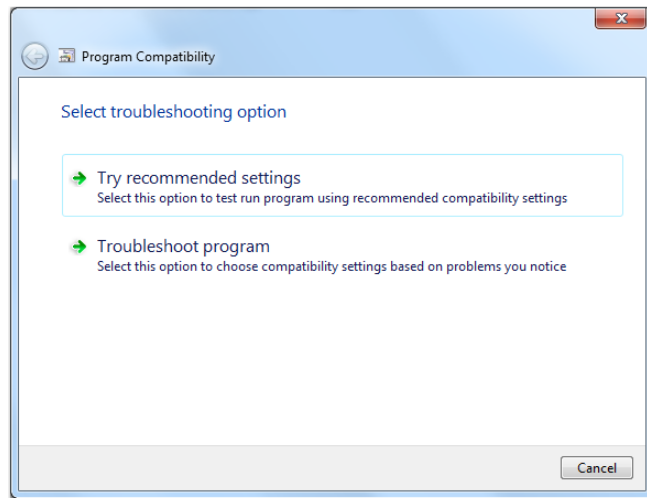
- Basics
- Skirts
- Sweaters

PHASE 1: THE INSTALLATION FILE

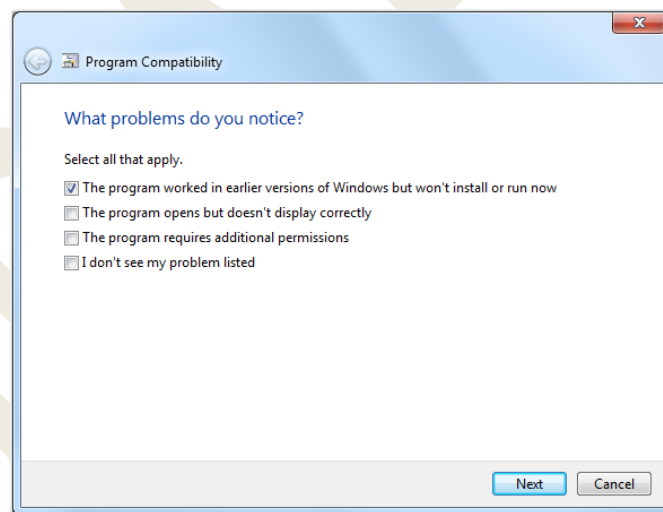
1. Find the *xxx250Demo.EXE* file that you .
2. Right-click the filename and, from the popup menu that appears, choose **“Troubleshoot compatibility”**:



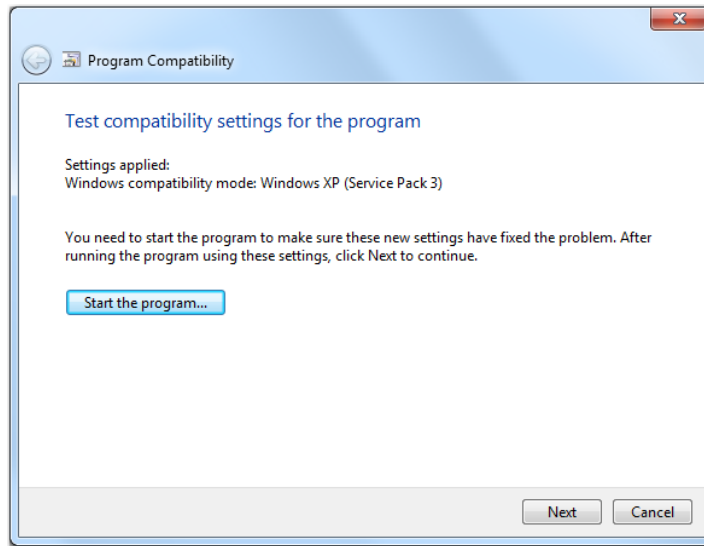
- When asked to select an option, select **“Troubleshoot program”**



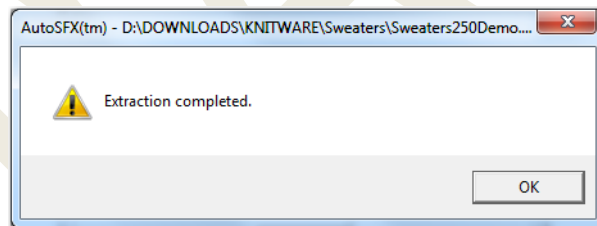
- When asked what problems have been noticed, select **“The program worked in earlier versions...”**



- On the next screen, select **“Windows XP (Service Pack 3)”**
- On the next screen, click the button to **“Start the Program”**



7. On your bottom task bar, you should see a button blinking. Click on it to display the “**User Account Control**” screen. Click on that and say “yes” to the query about allowing the program to modify the system.
8. Again on the bottom task bar, you will see a button labeled “**PKSFX for Windows**”. Click on that button to run the download file. This will extract all of the installation files for the KW program.
9. When you see the “**Extraction completed**” screen, click **OK**.



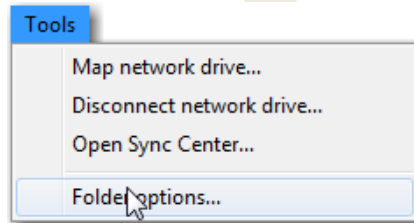
10. The “**Program Compatibility**” window should be displayed. If not, find it on your bottom task bar and click the appropriate button to display it, then click the **Next** button.
11. You'll see that troubleshooting has been completed. Click the option to “**Yes, save the settings...**”
12. **You can ignore the message** about an “Incompatible Application”. Just click “**Close**” or “**Close the Troubleshooter**” to exit.

You should see the following files in your folder:

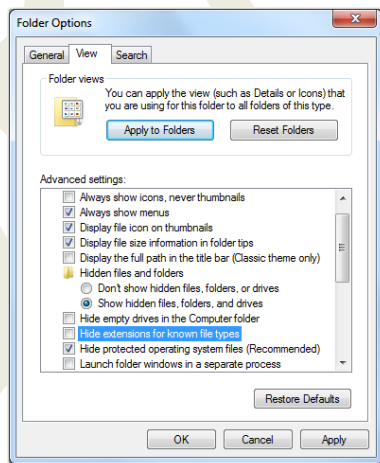
INST32I.EX	1/22/1996 4:08 AM
_ISDEL.EXE	9/7/1995 7:22 PM
_SETUP.1	4/21/2005 9:04 AM
_SETUP.DLL	9/26/1995 12:33 AM
_SETUP.LIB	4/21/2005 9:04 AM
DISK1.ID	4/21/2005 9:04 AM
SETUP.EXE	1/22/1996 3:59 AM
SETUP.INI	4/21/2005 9:04 AM
SETUP.INS	2/16/1996 1:26 AM
SETUP.ISS	4/21/2005 9:04 AM
SETUP.PKG	4/21/2005 9:04 AM

TIP

If you don't see the file types (.EXE, .DLL, etc.) displayed, you need to set the view options for Windows Explorer. To do this, in the menu bar, click on Tools, then Folder Options:



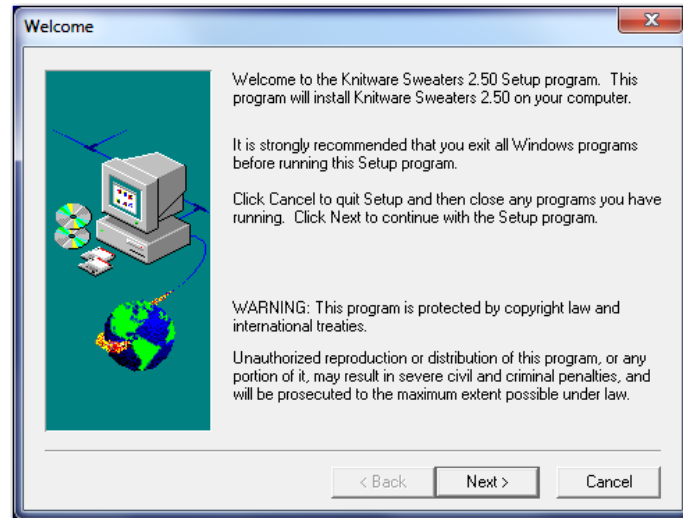
When the Folder Options box displays, click the View tab, then scroll down to find "Hide extensions..." and uncheck the box.



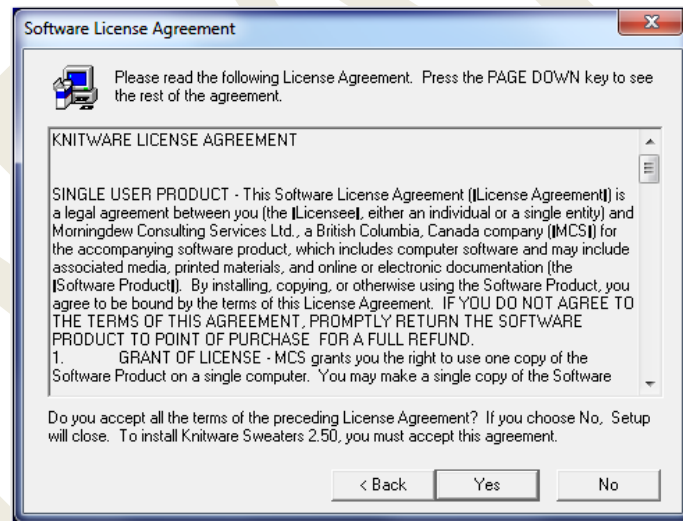
We recommend that you click the "Apply to Folders" button and say "yes" to apply it to all folders.

PHASE 2: RUNNING THE INSTALLATION

1. In the folder with the extracted files, double-click SETUP.EXE. When the welcome screen appears, click **Next**.

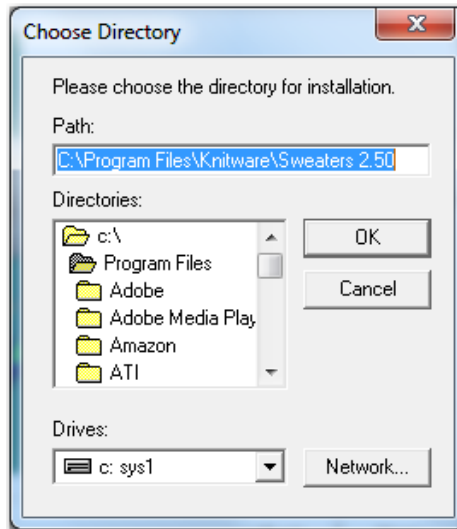


2. On the **Software License Agreement** screen, click **Yes**.

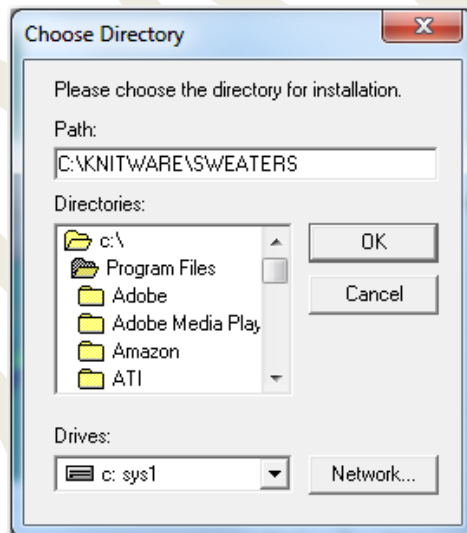


3. **IGNORE** the Readme Information and click **Next**.

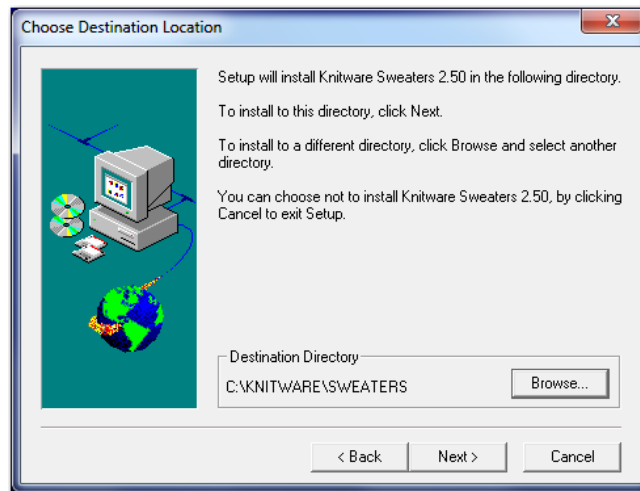
4. When the **Choose Destination Location** screen appears, **click the Browse button** to display the **Choose Directory** screen:



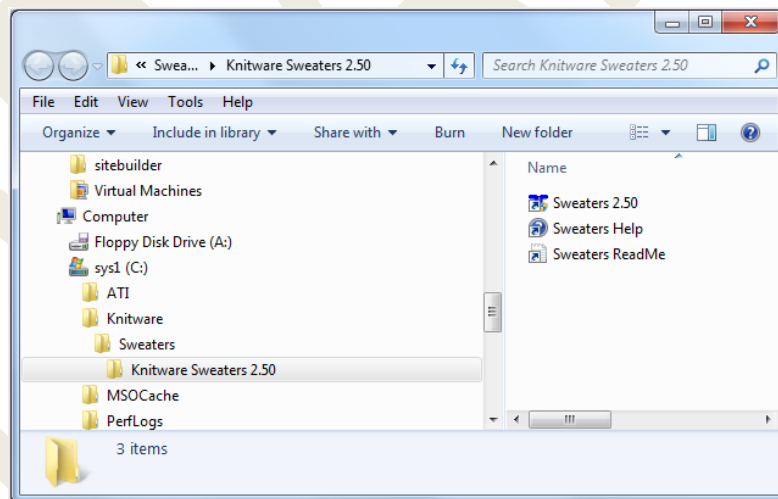
5. In the **Path** box of the **Choose Directory** window, type the name of a new folder location (*outside Program Files*) in which to install the KW program, in the manner shown here, then click **OK**:



- When the **Choose Destination Folder** screen reappears, make sure it shows the folder name entered in the previous step, then click **Next**:

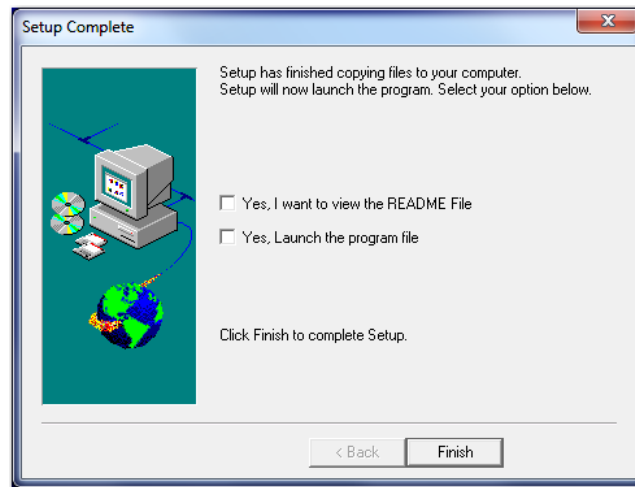


- In the **Select Program Folder** screen, click **Next**.
- In the **Start Copying Files** screen, click **Next**.
- After all the files are copied to the installation folder, you may see a screen displayed by Windows Explorer:



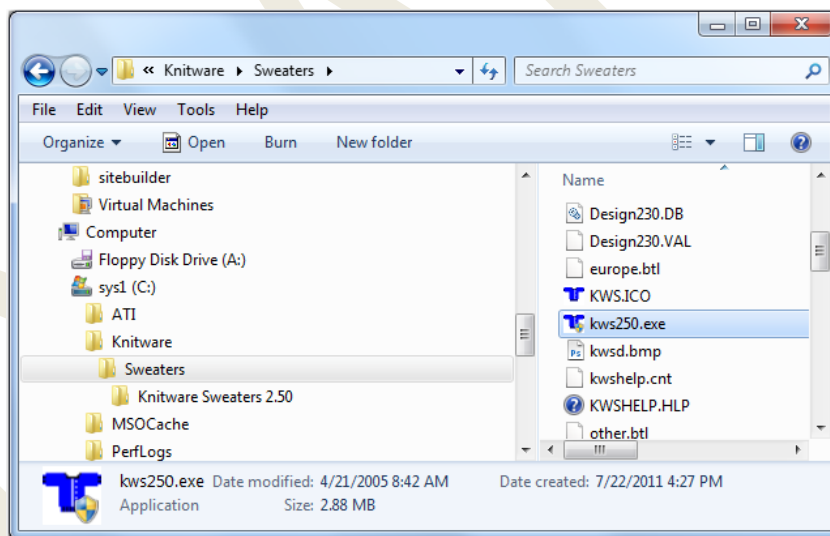
You can close this window, or leave it open and find the **Setup Complete** screen still displayed by the installer.

10. In the **Setup Complete** screen, make sure both boxes are **unchecked**, then click **Finish** to exit the installer:



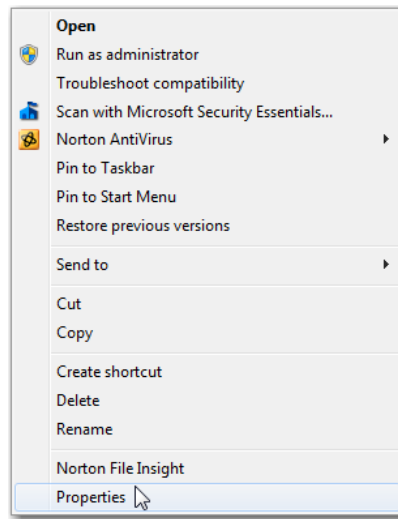
PHASE 3: SETTING THE PROGRAM PROPERTIES

Your installation folder will now look like this:

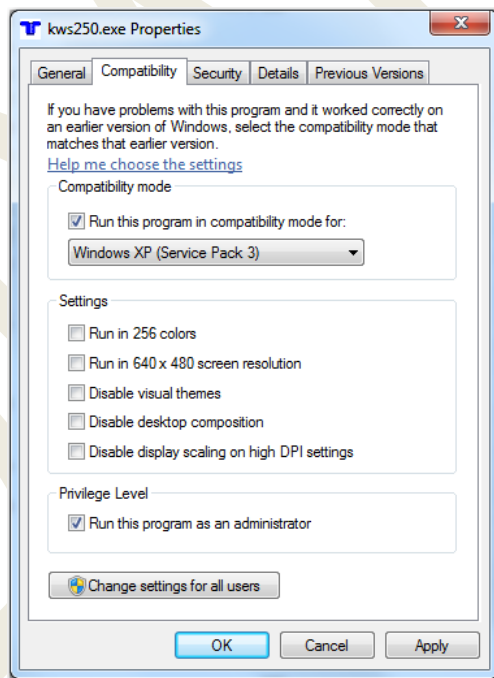


In the example shown here, *Knitware* is the “main” folder that we set up on the C: drive. We installed the Sweaters program into the *Sweaters* subfolder (specified in Step 5). The installer set up a subfolder under that called *Knitware Sweaters 2.50* to contain the “shortcuts” used to run the program. In the **Sweaters**, the file *kws250.exe* is the “executable” program file. The equivalent file for Skirts/Sweaters is *kwk250.exe*, while the executable file for Basics is *kwd250.exe*.

11. Find the executable file for the program you have just installed. Right-click the file name, and click **Properties** in the popup menu:



12. When the **Properties** window displays, check the boxes as shown below:



13. Click **OK** to apply these properties and close the window.

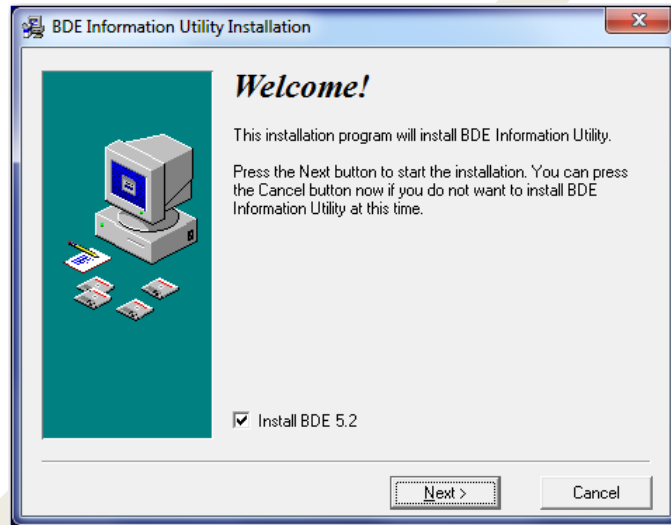
This program is now **almost** ready to run, but not quite yet...

If you are installing additional Knitware programs, repeat Phase 1 through Phase 3 for each program, then proceed with "Installing BDE".

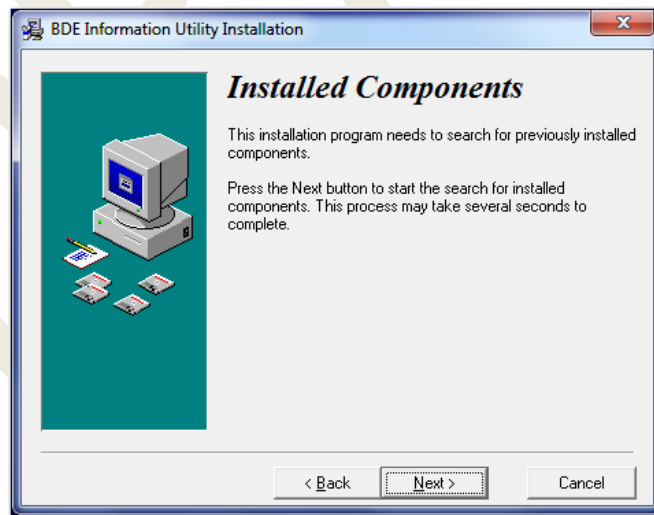
INSTALLING BDE

If you have installed all of the KW programs you wish to have, then you are ready to install the updated BDE program.

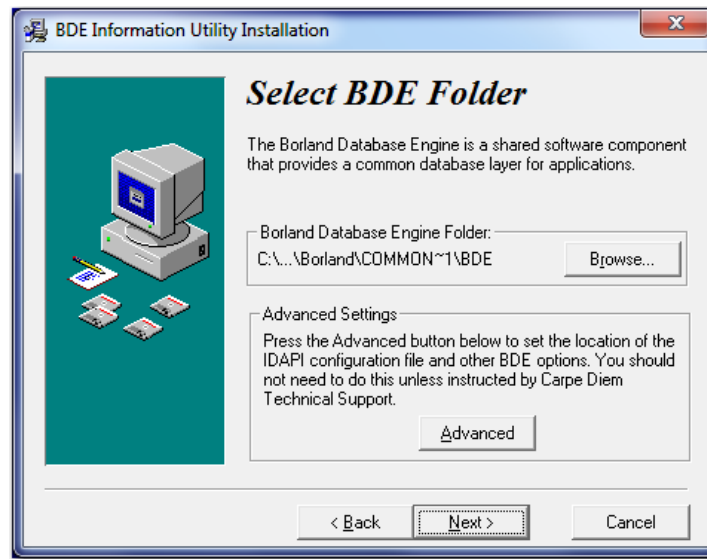
1. Navigate to the folder into which you set up *BDEInfoSetup.exe* when you prepared for installation.
2. Double-click the file to begin execution.
3. When the welcome screen displays, click **Next**:



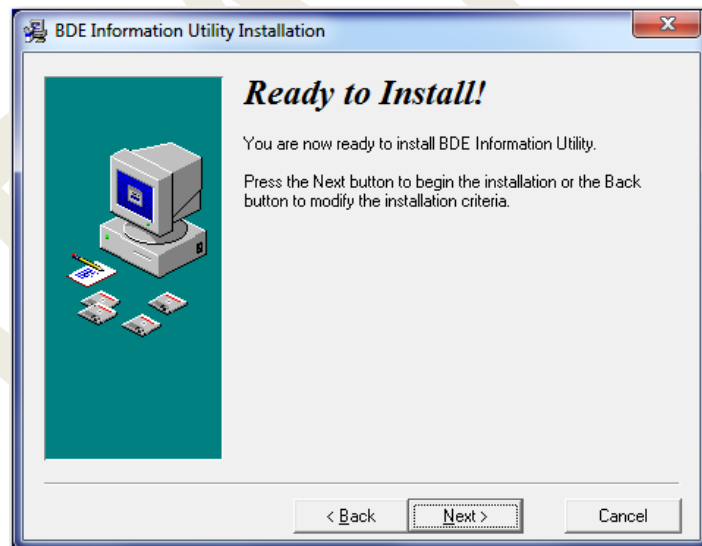
4. When **Installed Components** displays, click **Next**:



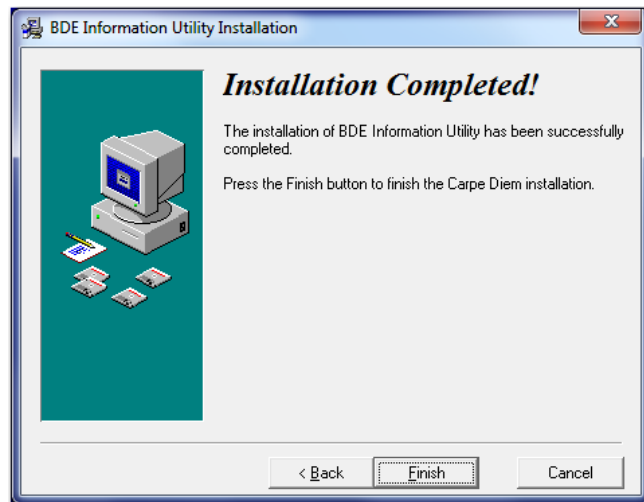
5. Click **Next** to accept the default BDE folder:



6. Click **Next** to begin the installation:



7. Click **Finish** when the installation is completed



Restarting Your System (optional)

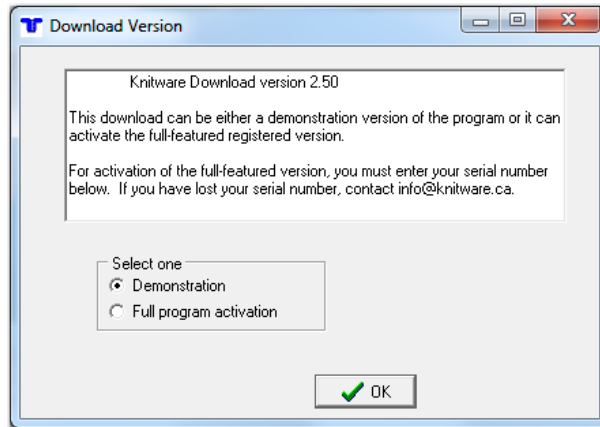
Although it is not absolutely required, we recommend that you restart your computer system at this time. Once you get back into Windows 7 after the restart, you should be able to run Knitware and, if you have a purchased a license and have a serial number, you should be able to activate the program without a problem.

Next Steps

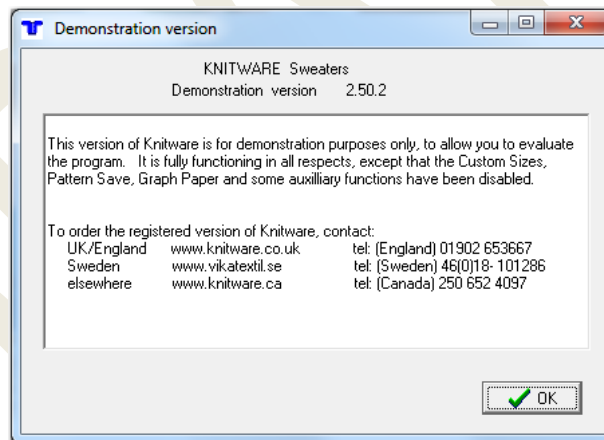
You're *almost* done! The next step is to run Knitware. If you have purchased a license key (serial number), you will also be directed in the proper way to enter the serial number for full program activation. Proceed to the next page.

Running Knitware

1. From the Windows 7 Start Menu, select your Knitware program.
2. For best results, start up the KW program first in **Demonstration** mode:



You will see this window:



*****IMPORTANT*****

DISREGARD ALL CONTACT INFORMATION SPECIFIED IN THIS WINDOW!

To order the registered version of Knitware, contact:

UK/England: www.jigsawknits.co.uk or www.knitware.uk.com

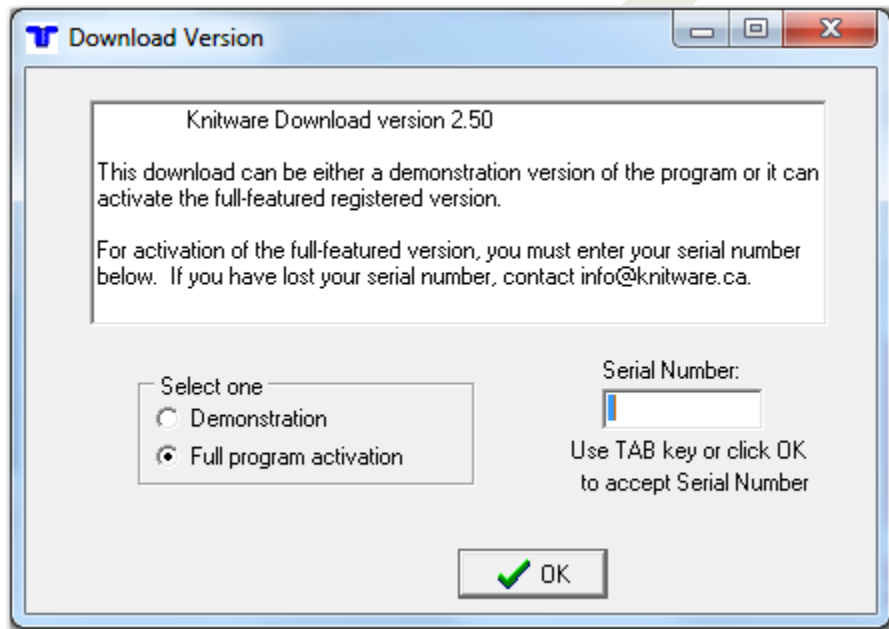
Sweden: www.vikatextil.se

Elsewhere: www.greatknitdesigns.com

3. Once Knitware starts successfully in demonstration mode, you may proceed to work with the program. If this is the first time you are using Knitware, you may wish to download and work through the *Getting Started* Guide, which is available from the GKD download page.

If you have a serial number for the program and wish to activate the demo for full functionality, close the program and proceed with the next steps.

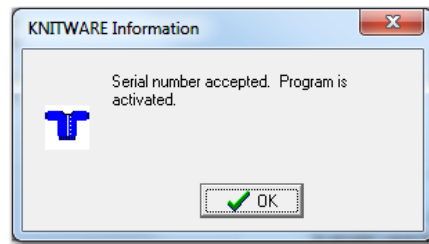
4. From the Start menu again, select the Knitware program and specify **Full program activation** and enter the **Serial Number**:



When entering the serial number:

- Enter all alphabetic characters (letters) in uppercase.
- Your serial number will **never** contain the **letter** “O”, so be sure you enter the **number** “0” (zero).
- There are no spaces (blank characters) in the serial number; also, be sure you do not enter a space after the last character.
- There will be 10 characters in the serial number:
 - The **first** character will always be a letter – either “S”, “K”, or “D”.
 - The **5th** character will always be a **hyphen** (“-“)
- For best results, do not copy your serial number from your confirmation e-mail and paste it into this field. Type the number in manually.

Once the serial number has been entered correctly, you should see this window:



If your serial number is not accepted, and you have followed all of the stated guidelines, do the following:

- Close the Knitware program.
- Restart the computer.
- Run the KW program again and try again to enter the serial number as directed.

Explanation: For some reason, and unpredictably so, you may have trouble getting Knitware to “see” the serial number correctly. It is unclear why this happens, but restarting the system and then the program seems to clear up the problem. Sometimes, a Windows “restart” did not work and it was necessary to shut the system off completely, and then power it back on. We don’t know why...if you can’t get past this, then contact support@greatknitdesigns.com and/or join the online Yahoo group at <http://groups.yahoo.com/group/knitwareusers/> and post your problem there. The good news is that you only have to enter the serial number once and this problem does not seem to ever appear in any other aspect of using KW.

Once your serial number is accepted, you’re “in” the program!

Congratulations on completing a successful installation and activation!