

Knitware 2.50.2 Installation Instructions for Windows 7 (Preliminary)

Contents

| | |
|--|----|
| Background | 2 |
| Disclaimer – READ BEFORE PROCEEDING | 2 |
| Windows 7 Professional and Ultimate Editions | 3 |
| Windows 7 Home Edition | 3 |
| Introduction | 3 |
| Cleaning Out Old Installations | 3 |
| Downloading Knitware | 4 |
| Downloading BDE | 4 |
| Installing Knitware | 4 |
| Phase 1: The Download File | 4 |
| Phase 2: Running the Installation | 9 |
| Phase 3: Setting the Program Properties | 12 |
| Installing BDE | 14 |
| Restarting Your System (optional) | 16 |
| Running Knitware | 17 |

Background

Knitware version 2.50.2 programs were last updated to run on 32-bit Windows XP systems. As a result, they are now designated as “legacy applications” for Windows. With the release of Windows 7, it appeared that compatibility for legacy programs was restricted to the more “advanced” editions of Windows 7 (Professional, Ultimate, etc., 32- or 64-bit), using “Microsoft Virtual PC” and “XP Mode” (*referred to as running in “virtual mode” as opposed to “native mode”*). Unfortunately, the majority of Windows 7 systems being sold are installed with Windows 7 Home, which does not support virtual mode, implying that users of Windows 7 Home cannot run Knitware programs, nor can “advanced” Windows 7 systems run Knitware in native mode.

Another vital aspect of running Knitware on Windows 7 in native mode involves the Borland Database Engine (BDE), a vital internal component of the Knitware programs. The BDE that is integrated in the current Knitware programs has now been updated to run on Windows 7. If the old BDE installed with Knitware is replaced with the updated BDE, then Knitware can be installed and set up to run on Windows 7 in native mode.

These instructions provide the list of steps necessary to achieve this.

Disclaimer – READ BEFORE PROCEEDING

Note that this document is the preliminary draft of a revised installation guide for Windows 7 users. If you have questions, please direct them to support@greatknitdesigns.com and we will work with you to try to resolve the problem. We would also appreciate hearing of any errors or points of confusion.

These instructions have been tested by Great Knit Designs (GKD) on 32-bit Windows 7 Professional and 32-bit Windows 7 Home Basic editions. They have been reported to work successfully on at least one system running 64-bit Windows 7 Ultimate edition. Please check http://www.greatknitdesigns.com/SupportNews_Win7.html for an updated list of confirmed installations as testing proceeds.

This new procedure assumes a basic understanding of, and comfort level with, the way that Windows 7 sets up your disk and folders and such, running programs on Windows 7, navigating to websites, downloading files, and working through installation procedures. If you are not comfortable with doing all of this, we encourage you to obtain the assistance of someone who is.

Windows 7 Professional and Ultimate Editions

If you have these advanced editions of Windows 7, you can run Knitware in either native mode or virtual mode. If you wish to run in virtual mode, you will need to download Virtual PC and XP Mode software from <http://www.microsoft.com/windows/virtual-pc/default.aspx>. The Microsoft website will provide instructions for the download and installation of these resources. **Note that you must first download and install these programs before installing Knitware programs, and to subsequently run Knitware, you will always have to run “XP Mode” first in order to start the “virtual PC”, then run Knitware from the virtual PC. Installation of Knitware in virtual mode is performed as per the Windows XP Installation Guide <<link to be provided>>.**

If you wish to run Knitware in native mode on these systems, you may do so by following the instructions for Windows 7 Home edition.

Windows 7 Home Edition

Introduction

These instructions currently presume you are installing one or more Knitware programs from files downloaded from <http://www.greatknitdesigns.com/download250.htm>. Instructions for installation from the product CD will be provided at a later time.

A critical aspect of this process is the installation of an updated version of the Borland Database Engine (BDE), an integral component of the Knitware (KW) programs. This updated BDE must be installed **after** installation of the KW programs and **before** running the programs. In addition, the KW programs are installed **outside** the usual location of the “Program Files” folder on your system’s C drive.

Cleaning Out Old Installations

If you attempted to install any KW program on your system prior to this, you **must** uninstall it and clean all traces of it off your system before starting this new procedure.

1. Open the Windows 7 Control Panel:
 - a. Navigate through Control Panel\Programs\Programs and Features and click on “Uninstall programs”.
 - b. Scroll down the list until you find the Knitware program to be uninstalled.
 - c. Select the program in the list, then look at the menu bar above the program names and click on “Uninstall/Change”.
 - d. Follow instructions presented to uninstall the program

Do this for **all** installed KW programs before proceeding with the next step.

2. Once you have uninstalled the KW program(s), find the original installation folder (this is usually *C:\Program Files\Knitware*) and delete it.
3. Restart your Windows 7 system to ensure that Knitware is completely removed.

Downloading Knitware

If you are planning to install more than one KW program, follow this procedure to download all of the desired programs before proceeding with installation.

1. Before starting the download, create a folder someplace on your system to hold the first KW program to download. This can be someplace on your hard disk, or as a subfolder of the *Downloads* folder created automatically by Windows 7 in your user area. GKD recommends that you create a distinct folder for each KW program.
2. From the <http://www.greatknitdesigns.com/download250.htm> web page, download the desired KW program into its designated folder.

Repeat this process for each additional KW program that you wish to install.

The download files are named as follows:

- *Sweaters250Demo.EXE*
- *Skirts250Demo.EXE*
- *Basics250Demo.EXE*

Downloading BDE

Create a folder someplace to receive the download of the updated Borland Database Engine (BDE), and then download it from **<<to be provided>>**. This file is named *BDEInfoSetup.exe*.

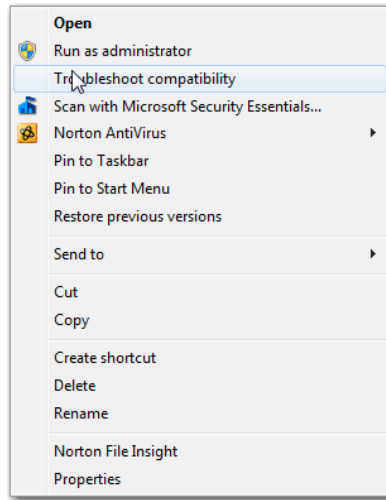
Installing Knitware

If you are planning to install more than one KW program, we recommend you first install Basics/Critters, then Skirts/Shawls, the Sweaters. Perform the installation process to completion for *each* KW program in this recommended order.

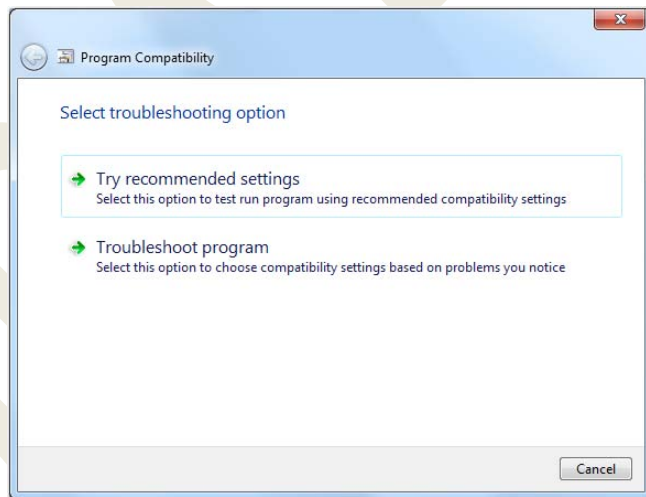
Phase 1: The Download File

1. Find the *xxx250Demo.EXE* file that you downloaded.
 - All download files provided by GKD are placed on the website after scanning to ensure they are free of viruses and other problems. However, if you wish to be absolutely safe, you should scan this file with your anti-virus software to ensure it is safe to proceed using. Refer to your anti-virus software documentation for information on how to do this.

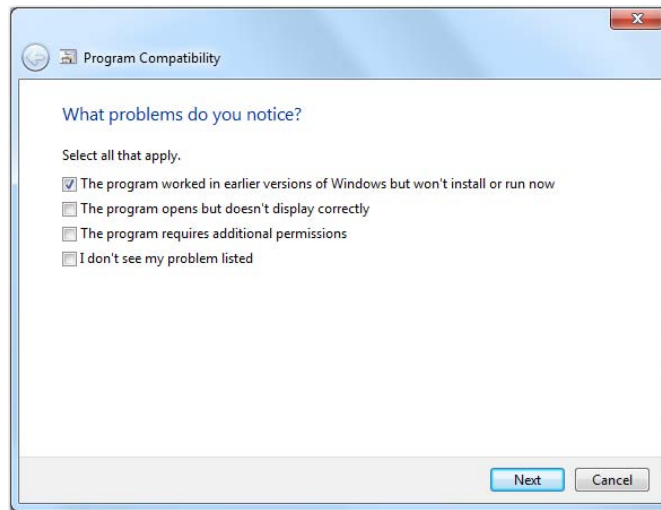
2. Right-click the filename and, from the popup menu that appears, choose “**Troubleshoot compatibility**”:



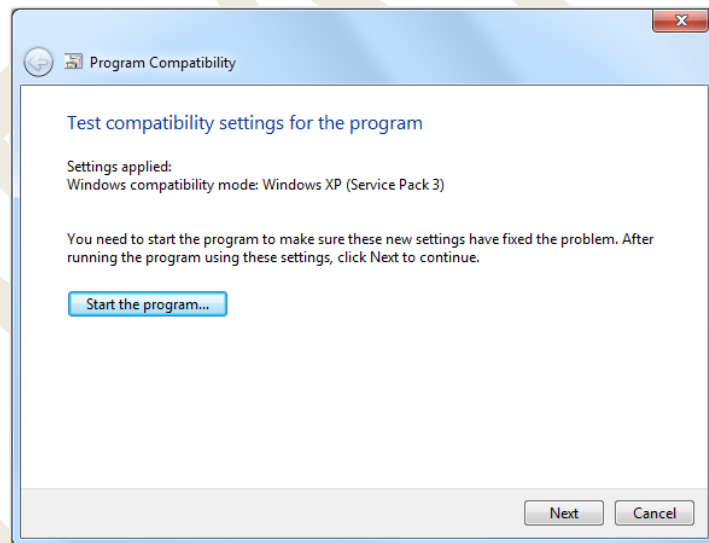
3. When asked to select an option, select “**Troubleshoot program**”



- When asked what problems have been noticed, select **“The program worked in earlier versions...”**

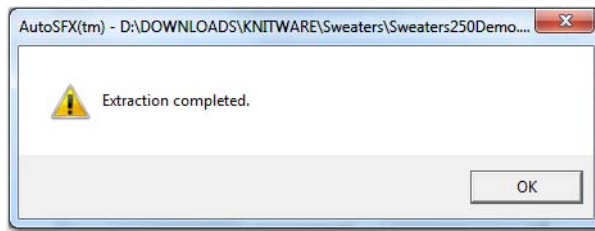


- On the next screen, select **“Windows XP (Service Pack 3)”**
- On the next screen, click the button to **“Start the Program”**



- On your bottom task bar, you should see a button blinking. Click on it to display the **“User Account Control”** screen. Click on that and say “yes” to the query about allowing the program to modify the system.
- Again on the bottom task bar, you will see a button labeled **“PKSFX for Windows”**. Click on that button to run the download file. This will extract all of the installation files for the KW program.

9. When you see the “**Extraction completed**” screen, click **OK**.



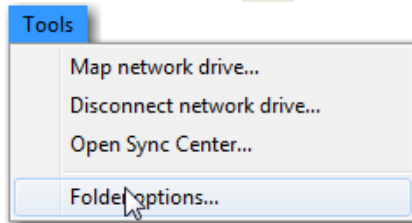
10. The “**Program Compatibility**” window should be displayed. If not, find it on your bottom task bar and click the appropriate button to display it, then click the **Next** button.
11. You'll see that troubleshooting has been completed. Click the option to “**Yes, save the settings...**”
12. *You can ignore the message* about an “Incompatible Application”. Just click “**Close**” or “**Close the Troubleshooter**” to exit.

You should see the following files in your folder:

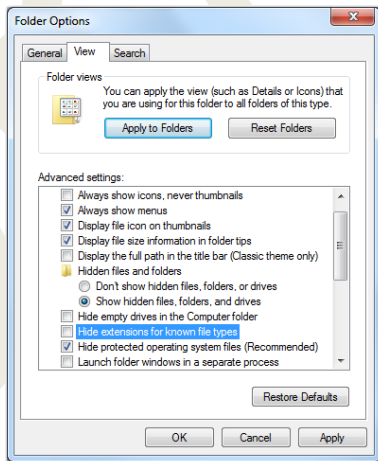
| | |
|--------------|--------------------|
| _INST32I.EX_ | 1/22/1996 4:08 AM |
| _ISDEL.EXE | 9/7/1995 7:22 PM |
| _SETUP.1 | 4/21/2005 9:04 AM |
| _SETUP.DLL | 9/26/1995 12:33 AM |
| _SETUP.LIB | 4/21/2005 9:04 AM |
| DISK1.ID | 4/21/2005 9:04 AM |
| SETUP.EXE | 1/22/1996 3:59 AM |
| SETUP.INI | 4/21/2005 9:04 AM |
| SETUP.INS | 2/16/1996 1:26 AM |
| SETUP.ISS | 4/21/2005 9:04 AM |
| SETUP.PKG | 4/21/2005 9:04 AM |

TIP

If you don't see the file types (.EXE, .DLL, etc.) displayed, you need to set the view options for Windows Explorer. To do this, in the menu bar, click on Tools, then Folder Options:

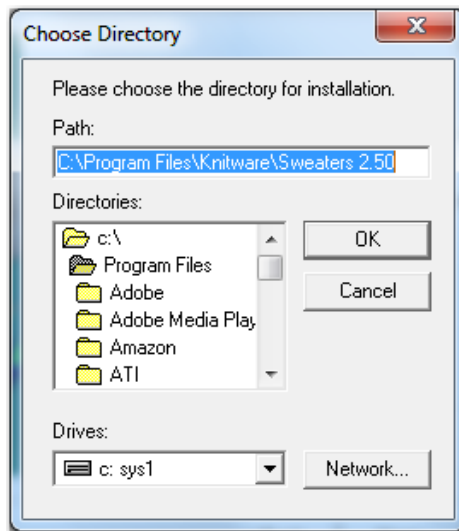


When the Folder Options box displays, click the View tab, then scroll down to find "Hide extensions..." and uncheck the box.

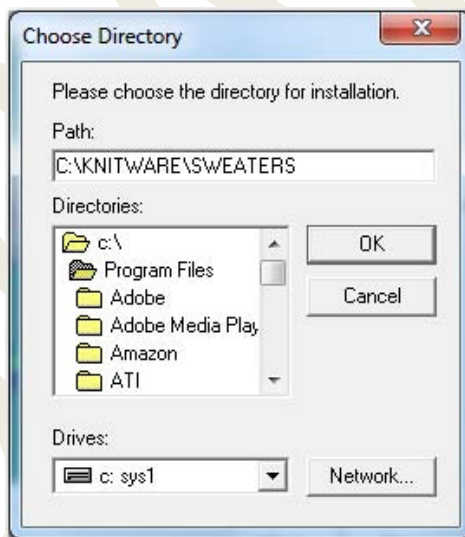


We recommend that you click the "Apply to Folders" button and say "yes" to apply it to all folders.

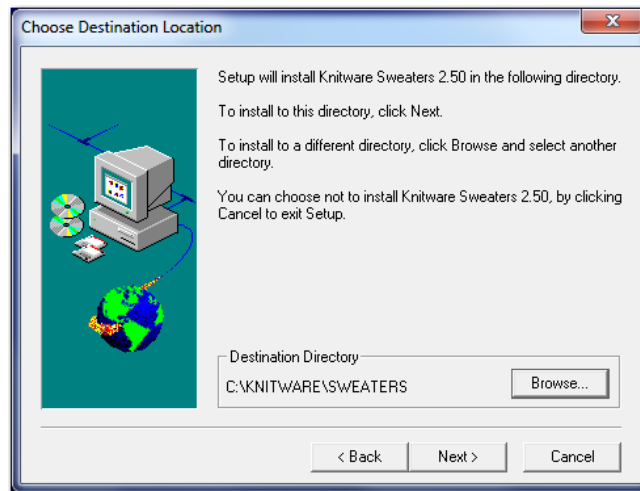
4. When the **Choose Destination Location** screen appears, *click the **Browse button*** to display the **Choose Directory** screen:



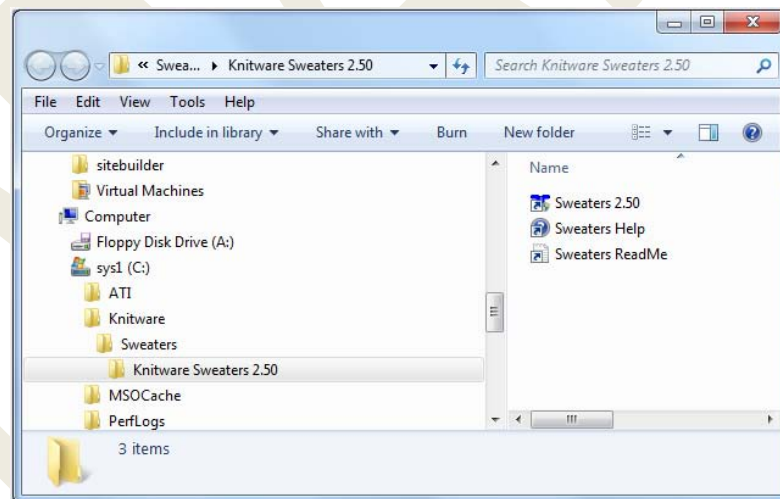
5. In the **Path** box of the **Choose Directory** window, type the name of a new folder location (*outside Program Files*) in which to install the KW program, in the manner shown here, then click **OK**:



- When the **Choose Destination Folder** screen reappears, make sure it shows the folder name entered in the previous step, then click **Next**:

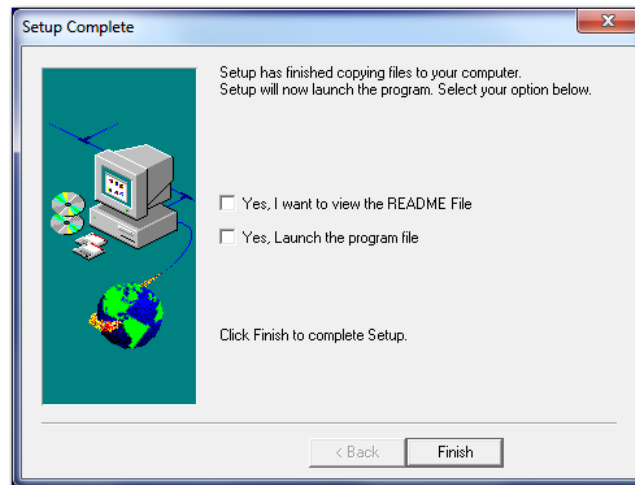


- In the **Select Program Folder** screen, click **Next**.
- In the **Start Copying Files** screen, click **Next**.
- After all the files are copied to the installation folder, you may see a screen displayed by Windows Explorer:



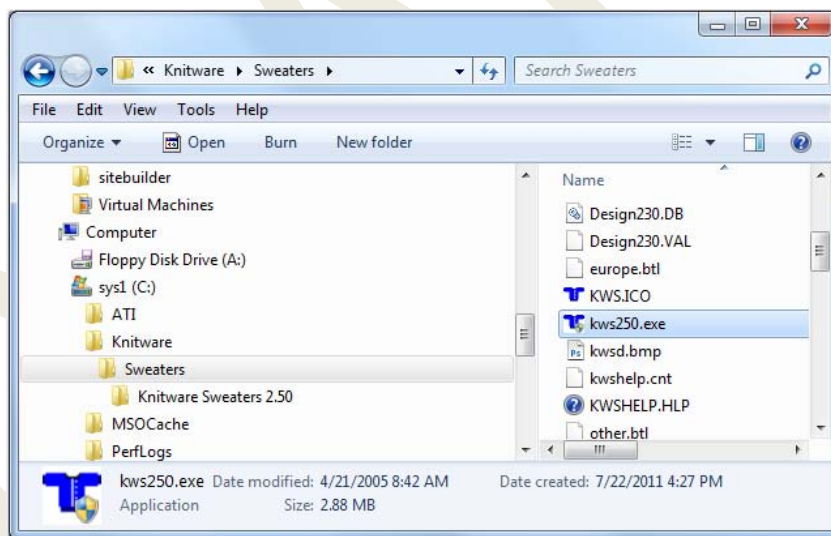
You can close this window, or leave it open and find the **Setup Complete** screen still displayed by the installer.

10. In the **Setup Complete** screen, make sure both boxes are **unchecked**, then click **Finish** to exit the installer:



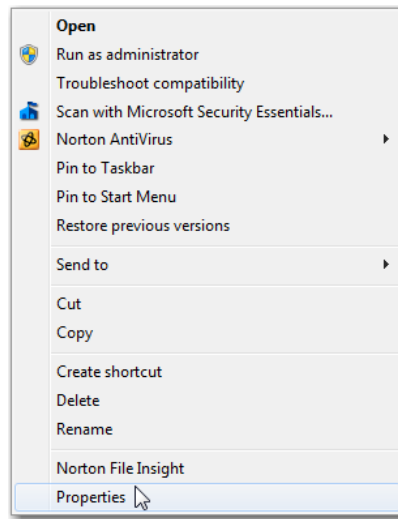
Phase 3: Setting the Program Properties

Your installation folder will now look like this:

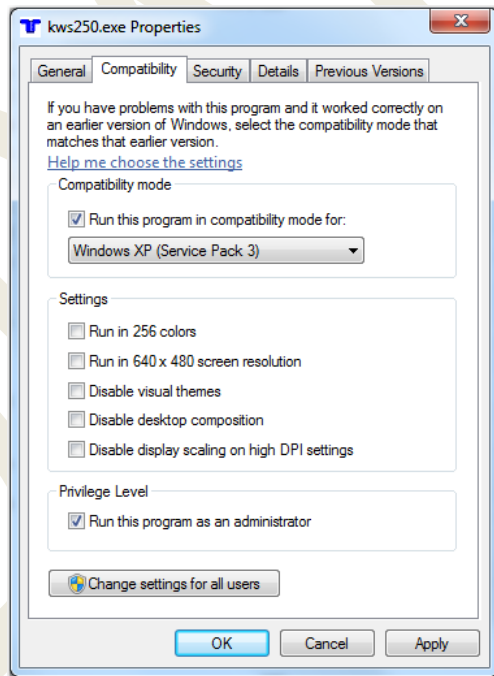


In the example shown here, *Knitware* is the “main” folder that we set up on the C: drive. We installed the Sweaters program into the *Sweaters* subfolder (specified in Step 5). The installer set up a subfolder under that called *Knitware Sweaters 2.50* to contain the “shortcuts” used to run the program. In the **Sweaters**, the file *kws250.exe* is the “executable” program file. The equivalent file for Skirts/Sweaters is *kwk250.exe*, while the executable file for Basics is *kwd250.exe*.

11. Find the executable file for the program you have just installed. Right-click the file name, and click **Properties** in the popup menu:



12. When the **Properties** window displays, check the boxes as shown below:



13. Click **OK** to apply these properties and close the window.

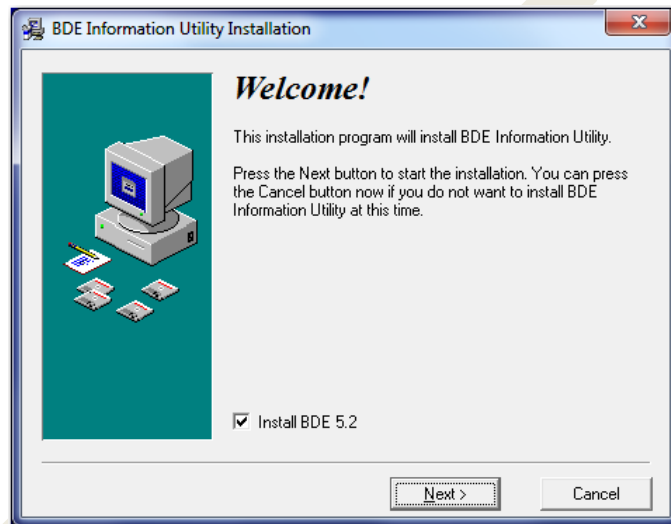
This program is now **almost** ready to run, but not quite yet...

If you are installing additional Knitware programs, repeat Phase 1 through Phase 3 for each program, then proceed with "Installing BDE".

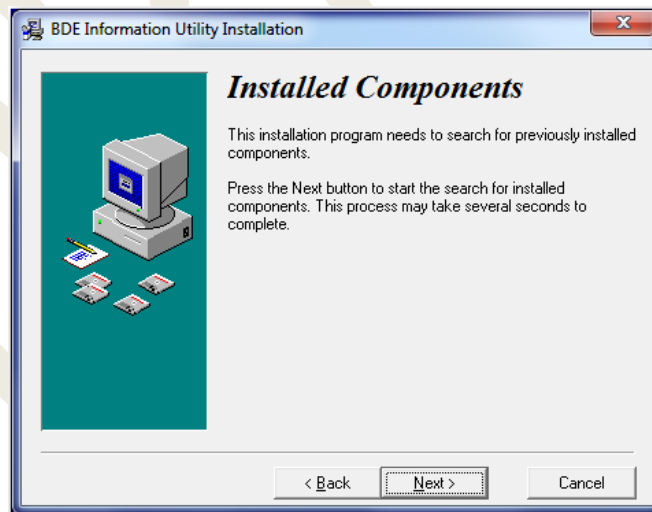
Installing BDE

If you have installed all of the KW programs you wish to have, then you are ready to install the updated BDE program.

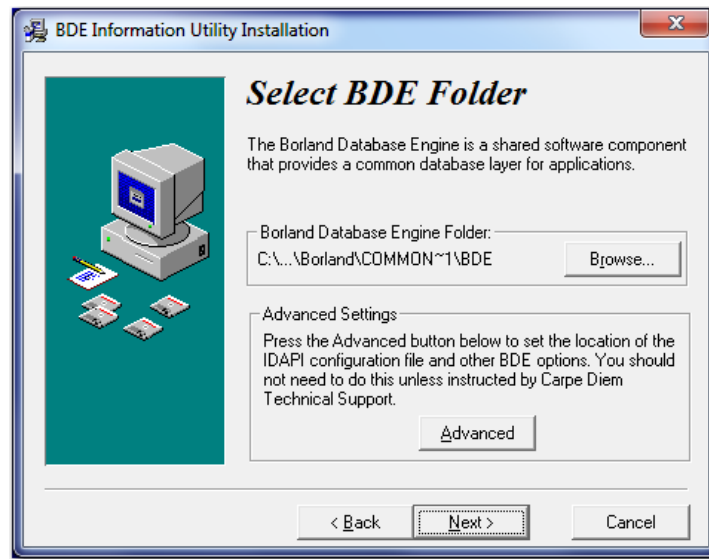
1. Navigate to the folder into which you downloaded *BDEInfoSetup.exe*. Double-click the file to begin execution.
2. When the welcome screen displays, click **Next**:



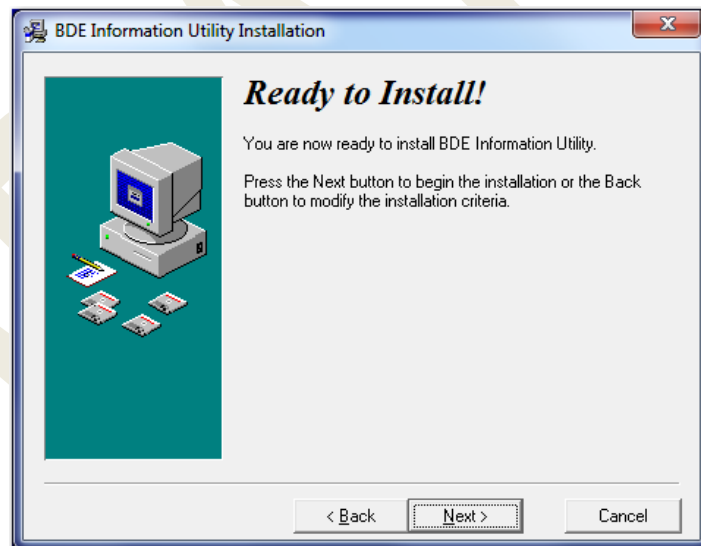
3. When **Installed Components** displays, click **Next**:



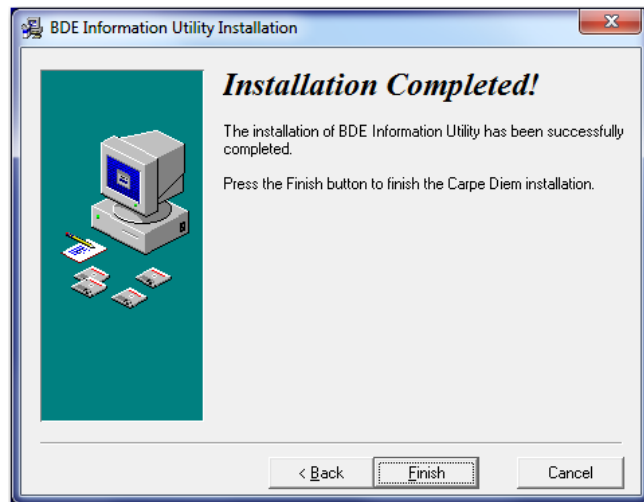
4. Click **Next** to accept the default BDE folder:



5. Click **Next** to begin the installation:



6. Click **Finish** when the installation is completed

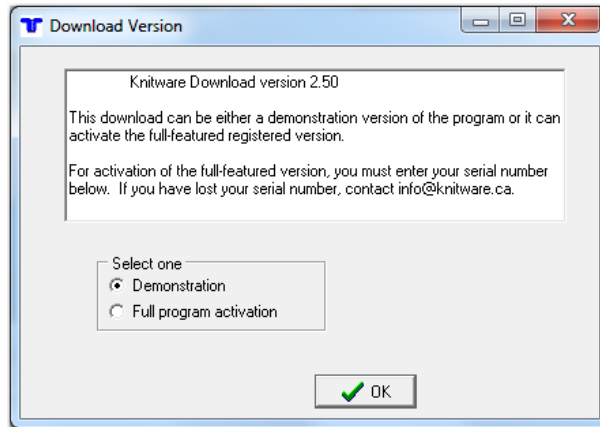


Restarting Your System (optional)

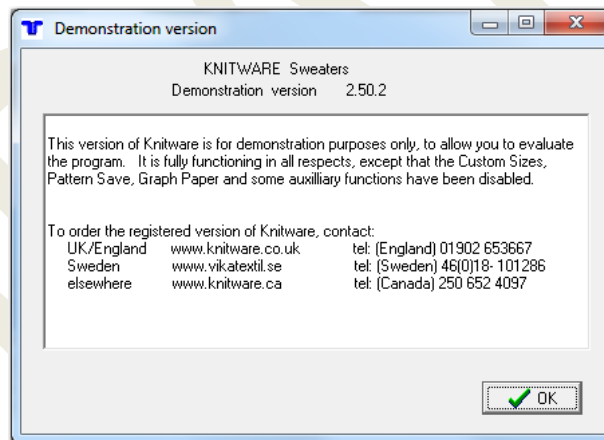
Although it is not absolutely required, we recommend that you restart your computer system at this time. Once you get back into Windows 7 after the restart, you should be able to run Knitware and, if you have a purchased a license and have a serial number, you should be able to activate the program without a problem.

Running Knitware

1. From the Windows 7 Start Menu, select your Knitware program.
2. For best results, start up the KW program first in **Demonstration** mode:



You will see this window:



*****IMPORTANT*****

DISREGARD ALL CONTACT INFORMATION SPECIFIED IN THIS WINDOW!

To order the registered version of Knitware, contact:

UK/England: www.jiqsawknits.co.uk or www.knitware.uk.com

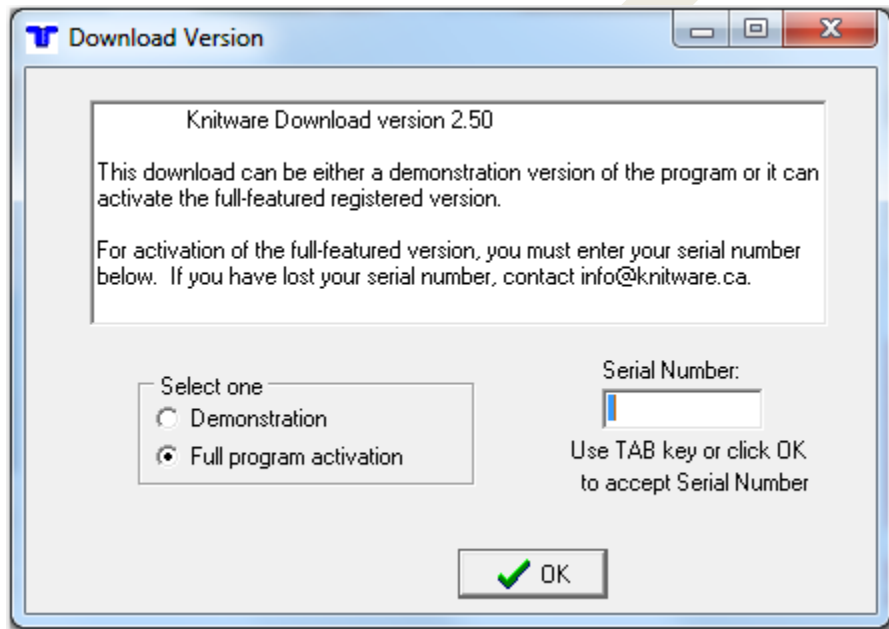
Sweden: www.vikatextil.se

Elsewhere: www.greatknitdesigns.com

3. Once Knitware starts successfully in demonstration mode, you may proceed to work with the program. If this is the first time you are using Knitware, you may wish to download and work through the *Getting Started* Guide, which is available from the GKD download page.

If you have a serial number for the program and wish to activate the demo for full functionality, close the program and proceed with the next steps.

4. From the Start menu again, select the Knitware program and specify **Full program activation** and enter the **Serial Number**:



When entering the serial number:

- Enter all alphabetic characters (letters) in uppercase.
- Your serial number will **never** contain the **letter** "O", so be sure you enter the **number** "0" (zero).
- There are no spaces (blank characters) in the serial number; also, be sure you do not enter a space after the last character.
- There will be 10 characters in the serial number:
 - The **first** character will always be a letter – either "S", "K", or "D".
 - The **5th** character will always be a **hyphen** ("-")
- For best results, do not copy your serial number from your confirmation e-mail and paste it into this field. Type the number in manually.

Once the serial number has been entered correctly, you should see this window:



If your serial number is not accepted, and you have followed all of the stated guidelines, do the following:

- Close the Knitware program.
- Restart the computer.
- Run the KW program again and try again to enter the serial number as directed.

Explanation: For some reason, and unpredictably so, you may have trouble getting Knitware to “see” the serial number correctly. It is unclear why this happens, but restarting the system and then the program seems to clear up the problem. Sometimes, a Windows “restart” did not work and it was necessary to shut the system off completely, and then power it back on. We don’t know why...if you can’t get past this, then contact support@greatknitdesigns.com and/or join the online Yahoo group at <http://groups.yahoo.com/group/knitwareusers/> and post your problem there. The good news is that you only have to enter the serial number once and this problem does not seem to ever appear in any other aspect of using KW.

Once your serial number is accepted, you’re “in” the program!

Congratulations on completing a successful installation and activation!